

Il termostato meccanico serie **RT** permette di regolare il riscaldamento o condizionamento in funzione del proprio stile di vita.

I termostati della serie **RT** sono stati progettati per adattarsi a tutte le fonti di energia. (gas, gasolio, elettrico).

Regolazione della temperatura da +5 a +30°C.

Termostato ad espansione di vapore saturo.

Disponibile in otto versioni diverse, dal semplice contatto di interruzione al contatto in commutazione con lampada spia, interruttore ON/OFF, resistenza per abbassamento notturno. (Vedere schemi di dettaglio sul retro)

Versioni diverse su richiesta.

The **RT** series mechanical thermostats allow heating or cooling control according to our own lifestyle requirements.

The **RT** series thermostats have been designed to work with all energy sources (gas, heating oil, electricity).

Temperature control between +5° and +30°C.

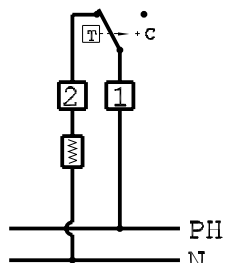
Saturated steam expansion thermostat.

Available in eight different versions, from simple on-off contacts to switching contact with signal light, ON/OFF switch and element for night-time temperature lowering. (See detailed drawing on back).

Other version on request.

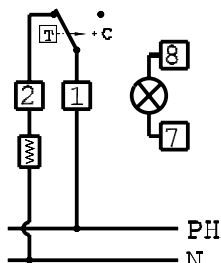
RT01

contatto in interruzione
break contact



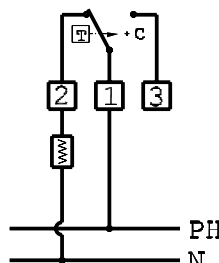
RT05

contatto interruzione e lampada spia
break contact and warning lamp



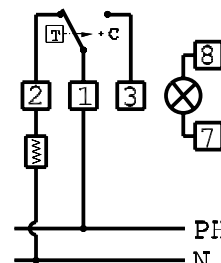
RT10

contatto in commutazione
switching contact



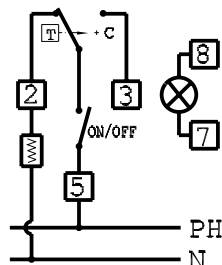
RT20

contatto in commutazione,
lampada spia
switching contact, warning lamp



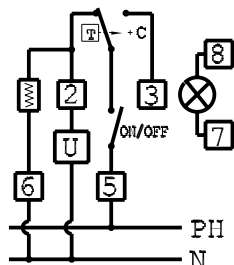
RT30

interruttore ON/OFF, contatto in
commutazione, lampada spia
ON/OFF switch, switching contact,
warning lamp



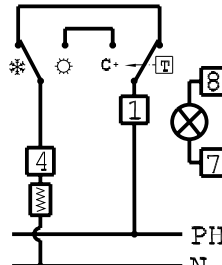
RT35

interruttore ON/OFF, contatto in
commutazione, lampada spia,
resistenza anticipatrice
ON/OFF switch, switching contact,
warning lamp, anticipator resistor



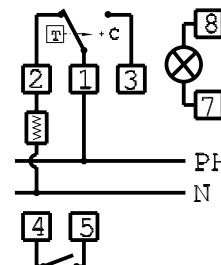
RT40

interruttore ESTATE/INVERNO,
contatto in commutazione,
lampada spia
SUMMER/WINTER switch,
switching contact, warning lamp



RT60

interruttore indipendente,
contatto in commutazione,
lampada spia
independent switch, switching
contact, warning lamp



Alimentazione RT05/20/30/35/40/60 Power supply	230 Vac
Portata contatto RT01/10 SPST/SPDT Contacts rating	16A 250Vac (cosφ1) 2,5A 250Vac (cosφ0,6)
Portata contatto RT05/20/30/35/40/60 SPST/SPDT Contacts rating	10A 250Vac (cosφ1) 1,5A 250Vac (cosφ0,6)
Materiale contatto Contact material	Ag 1000/1000
Campo di regolazione Temperature range	+5 ... +30°C
Differenziale Temperature differential	≤ 1°C
Gradiente termico Thermal gradient	1°C / 15 min
Grado di protezione IP IP index of protection	IP20
Tipo di azione Type of action	1B